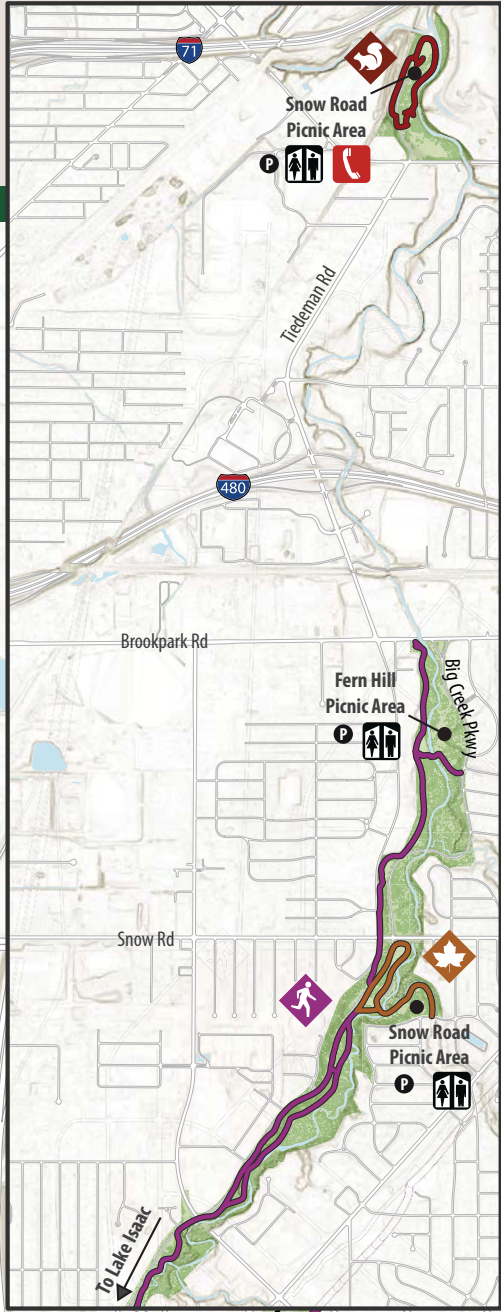
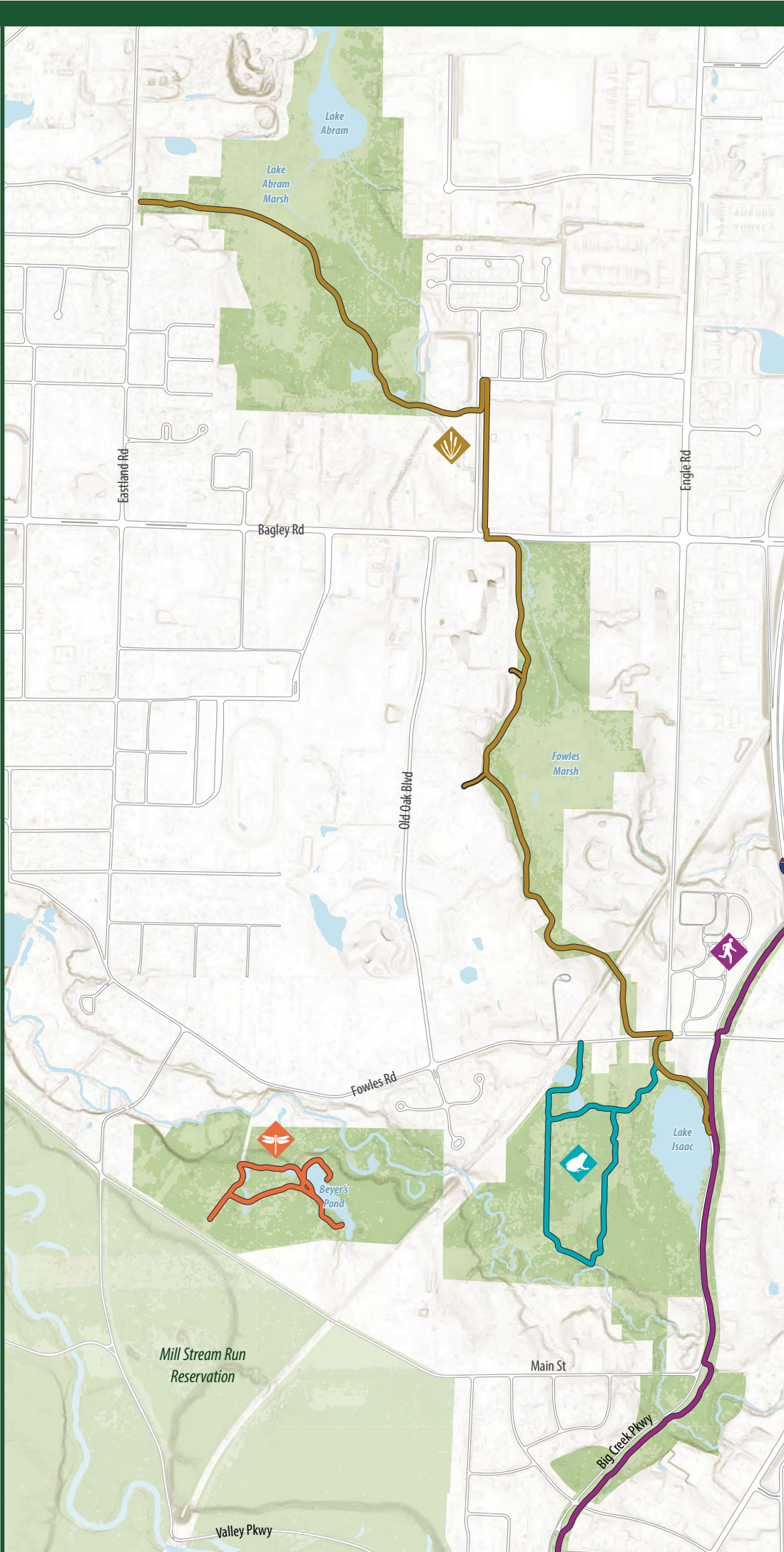



Big Creek Reservation



-  **Lake to Lake Trail:** 2.4 miles. Dramatic views and interpretive information about the paved trail and boardwalks that connect lakes Isaac and Abram. Children can discover mastodon bones at the Prehistoric Play Pit at the Eastland Road Trailhead.
-  **Beyer's Pond Loop:** 0.7 mile. This easy trail circles Beyer's Pond which can attract abundant wildlife including: ducks, geese, frogs and dragonflies.
-  **Lake Isaac Loop:** 1.2 miles. Your journey starts at a "glacial pothole" lake which is an important waterfowl refuge. This easy trail winds through several habitats and a scenic overlook of Baldwin Creek.
-  **Snow Road Loop:** Need Text Here
-  **Memphis Picnic Area Trail:** 0.6 mile. This flat, easy trail follows the course of Big Creek as it winds through the Memphis Picnic Area. Watch for scenic views of shale cliffs and glimpses of wildlife in forests and meadows
-  **All Purpose Trail:** 8 miles of paved trail for activities like cycling, walking and in-line skating. Motorized vehicles are prohibited.

 Emergency Phone

 Restrooms

